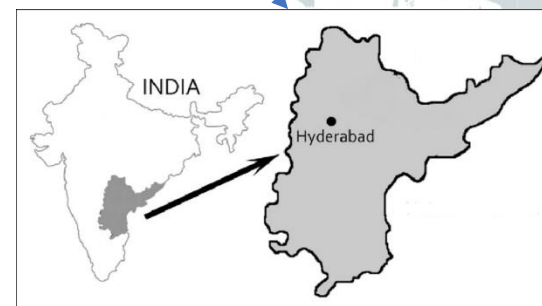
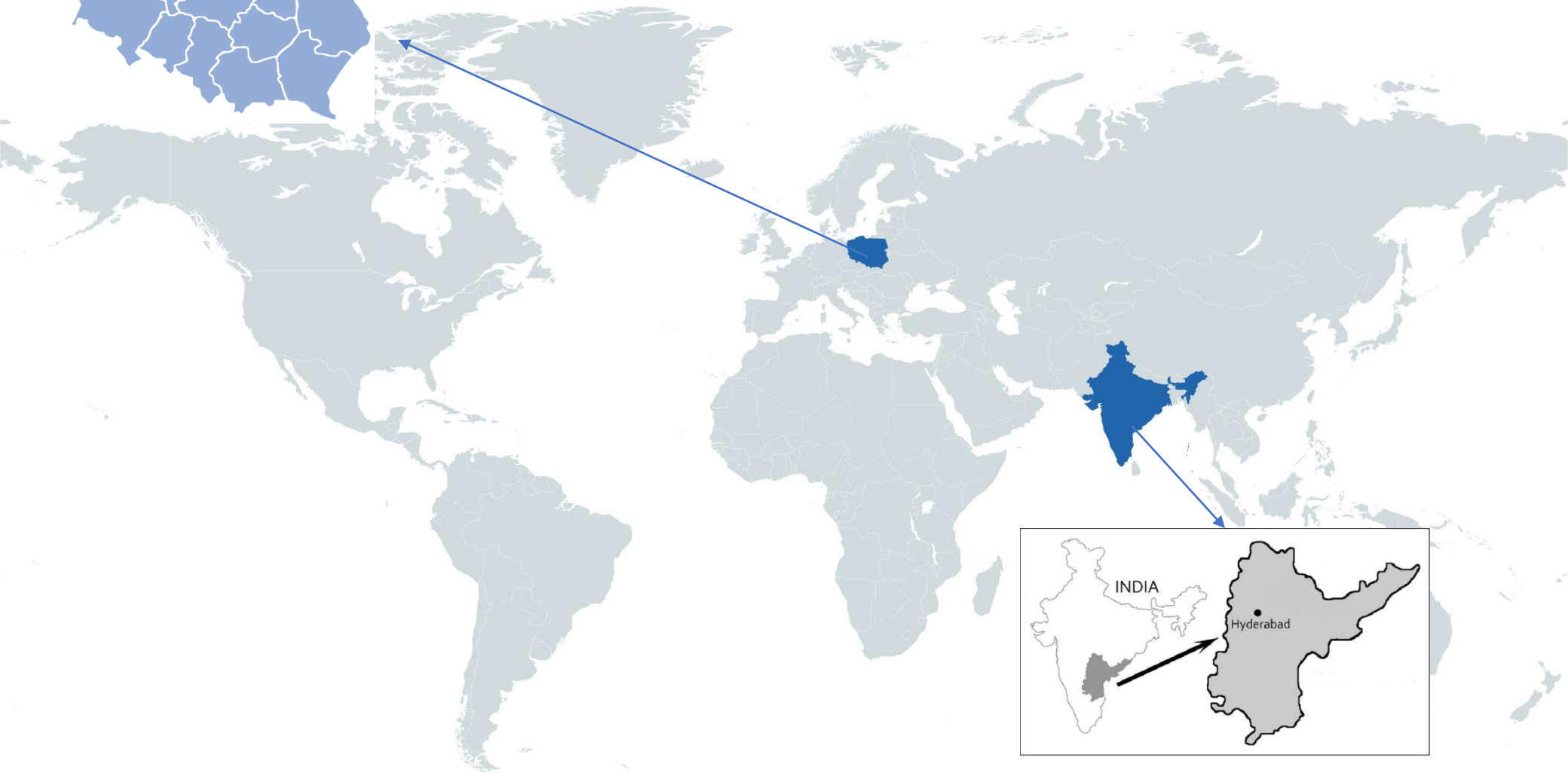




POLMOR

**Polmor Steel Pvt. Ltd., Plot No: 26H TO 26K TSIC Industrial park, Muppireddy palli village,
Manoharabad Mandal, Medak District-502336 (HYDERABAD). Website: www.polmor.in
Contact No.: +91 -733733 7870 / 733733 7871**

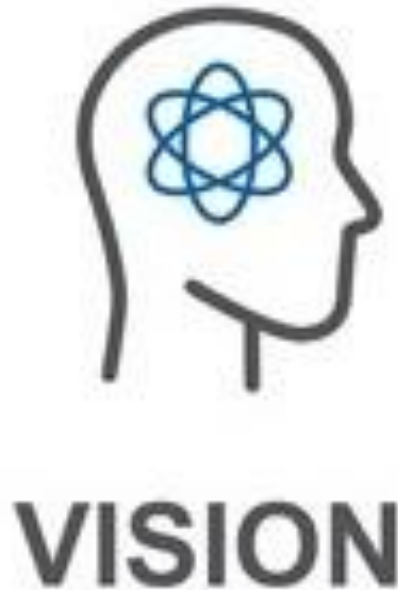


Poland



India

POLMOR VISION



To be a preferred and respected business partner globally, Delight customers by offering exceptional value propositions through a highly motivated and extraordinary team along with innovative technologies and world-class efficient systems leading to sustainable business relationships.



Steel Pvt Ltd. Board



MANAGING DIRECTOR

V R SUBBA RAO KALAKONDA

Phone: +91 98495 44666

E-mail: subbarao.kalakonda@polmor.in

DIRECTOR

Roger van Steensel

Mobile: +48 600 09 15 50

E-mail: roger.vansteensel@polmor.pl

DIRECTOR

Piotr Lubiński

Phone: +48 59 822 30 84 ext. 208

Mobile: +48 608 06 38 27

E-mail: piotr.lubinski@polmor.pl

DIRECTOR

Piotr Smorawski

Mobile: +48 600 35 24 31

E-mail: piotr.smorawski@polmor.pl

HEAD OF FINANCE

Balaraju Vanga

E-mail: balaraju.vanga@polmor.in

HEAD OF PRODUCTION

Karunakar Mokara

E-mail: karunakar.mokara@polmor.in

HEAD OF PURCHASE

Nikhil kumar Sagi

E-mail: purchase@polmor.in

HEAD OF SALES & PROJECTS

Ram Garikapati

Mobile: +91-733 733 7632

E-mail: ram.garikapati@polmor.in

HEAD OF ENGINEERING

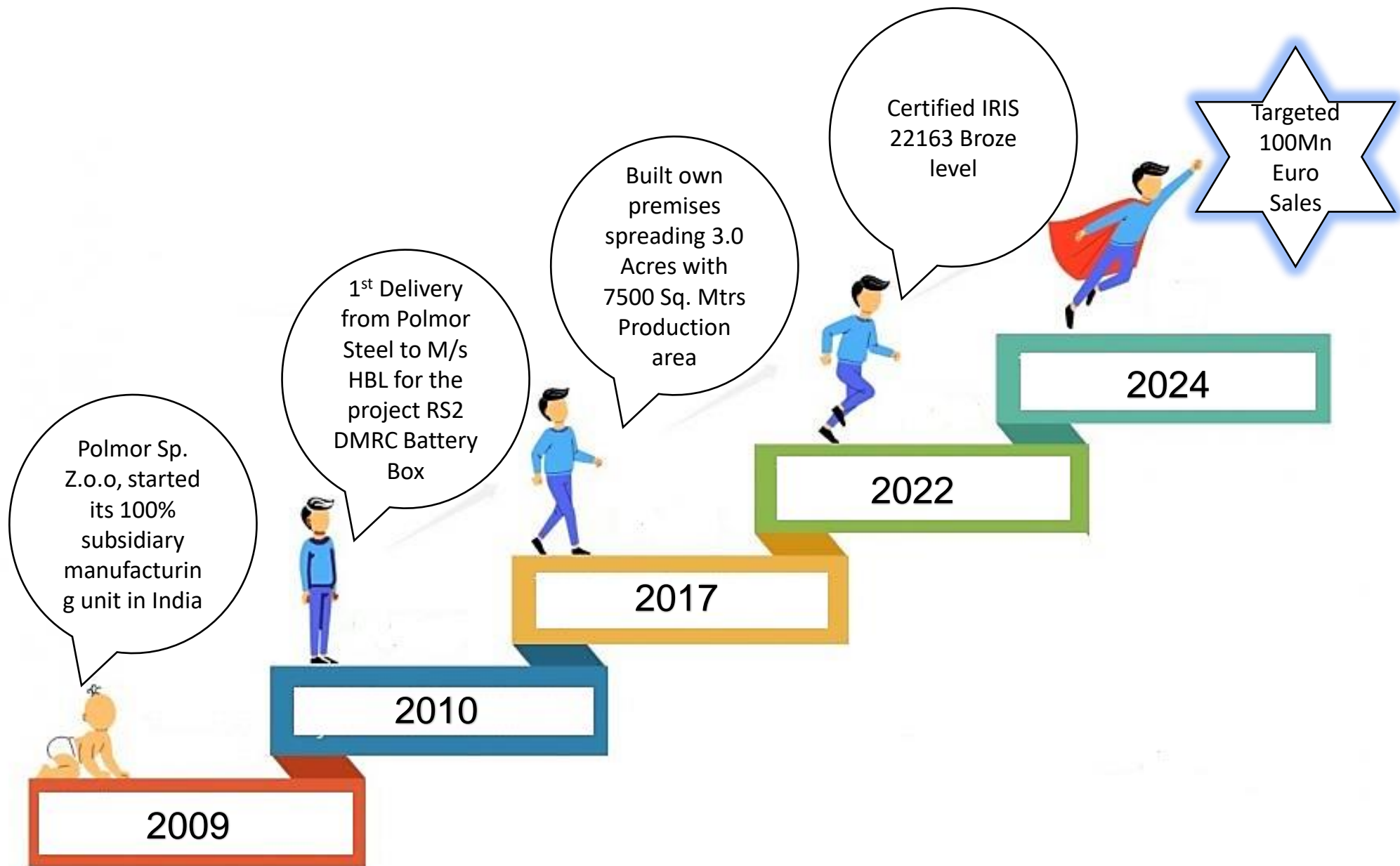
Rajashekar ch

E-mail: rajasekhara.chelluboina@polmor.in

HEAD OF QUALITY

Sunita Kumari Panda

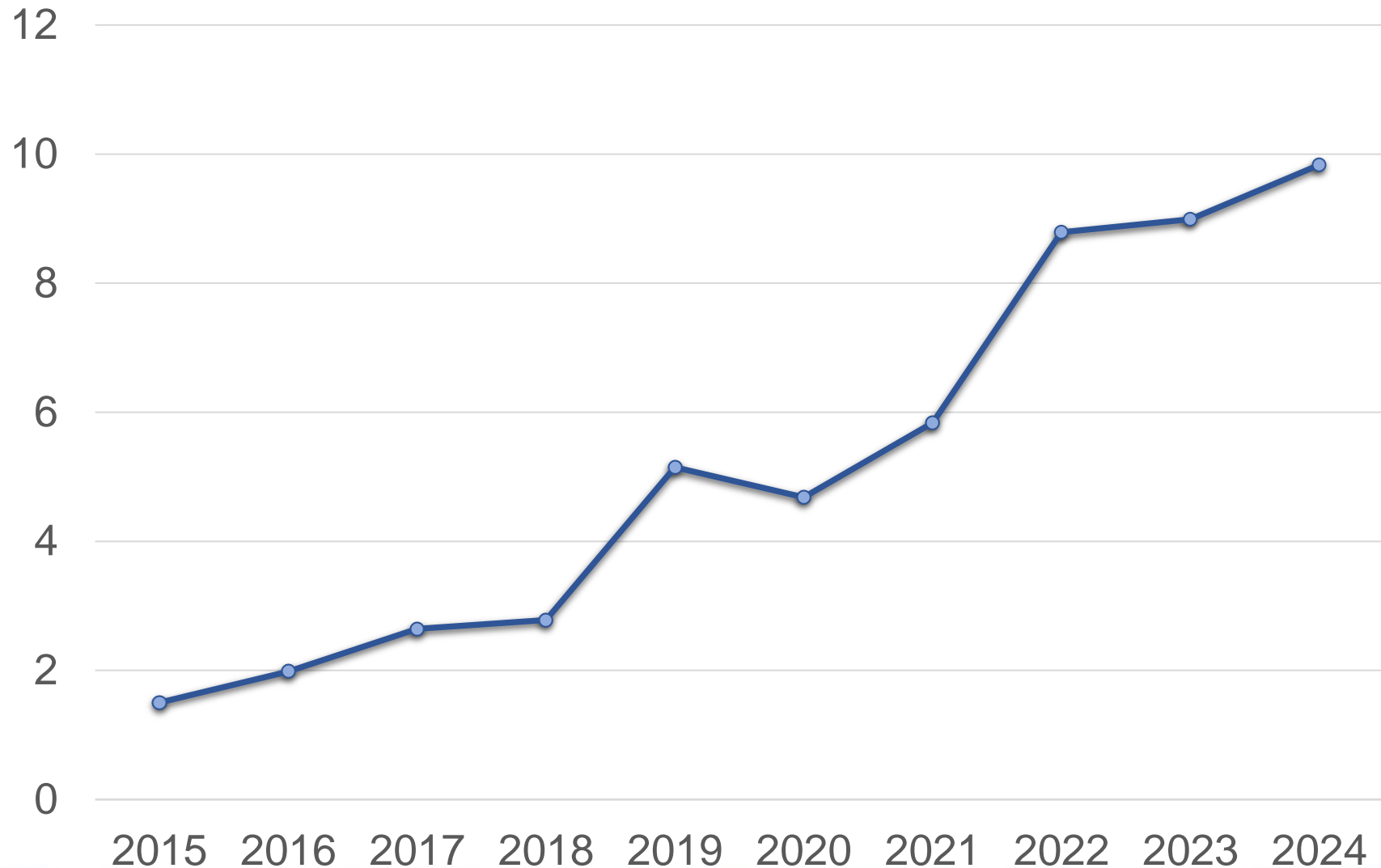
E-mail: sunitakumari.panda@polmor.in



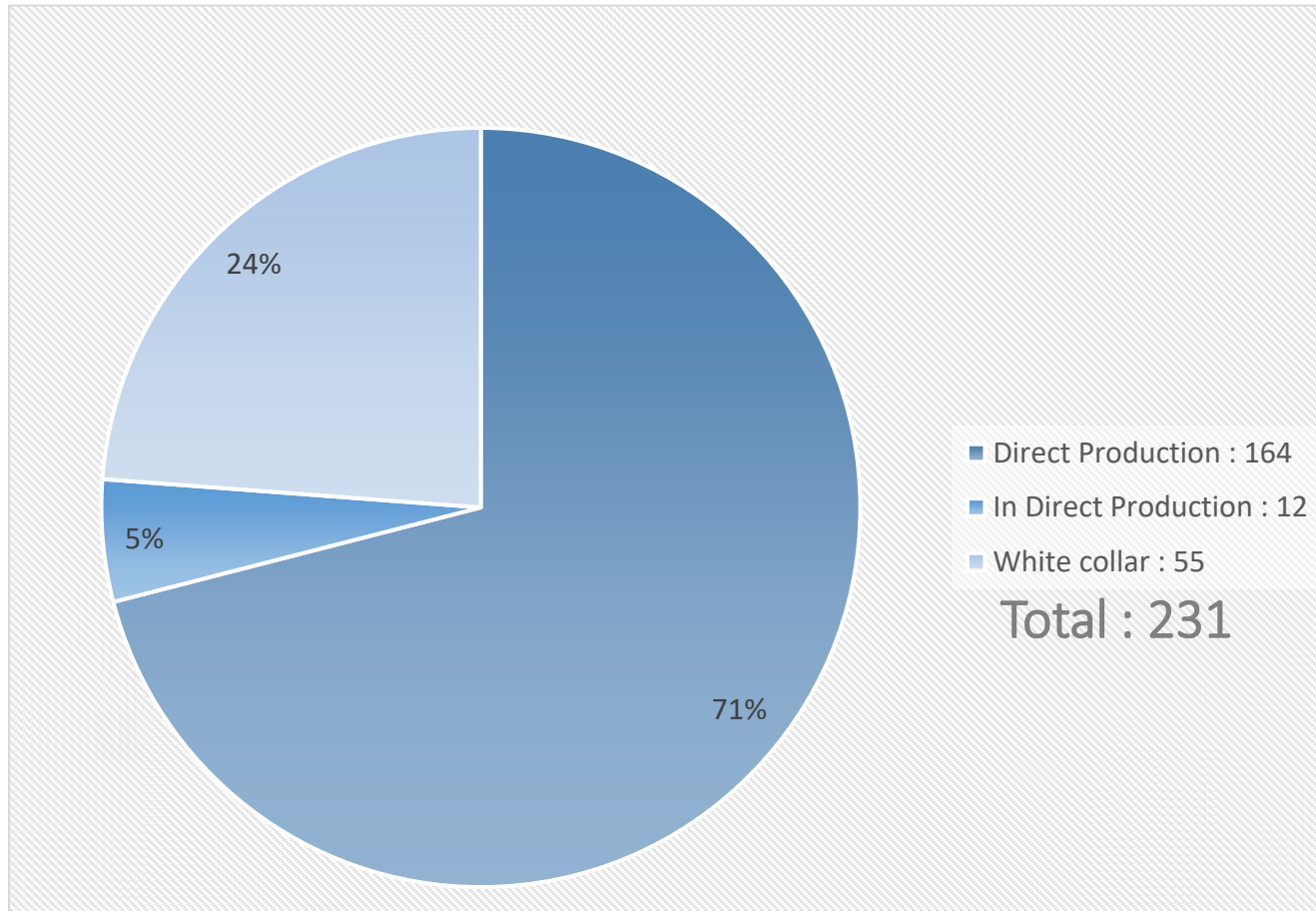
Our Journey.....

- In the year 2009, Polmor Sp. Z.o.o, Bytow, Poland has started its 100% subsidiary Indian manufacturing unit in Hyderabad named Polmor Steel Private Limited targeting the core experience of components manufacturing for the Metro rail industry.
- The strategic location allows us to position ourselves in the epicentre for all our main customers spread pan India like Alstom-Coimbatore & Sricity, SAFT-Bangalore, ABB-Pune (Hitachi Energy), Siemens-Nasik.
- The first project Polmor Steel India has to take up is Battery containers for BT – RS 2 Project for DMRC.
- Progressively the number of projects is increasing and the corresponding technical force is also increasing who are highly qualified and professionally trained and experienced in their arena.
- Today we proudly say that Polmor Steel India has 200+ technical staff with its own manufacturing facility of 7,500 Sq. Meters spread over 12,140 Sq. Meters area.
- Our supplies serve both global and domestic rail manufacturers.

SALES TREND IN MILLION EURO



ORGANIZATION CHART

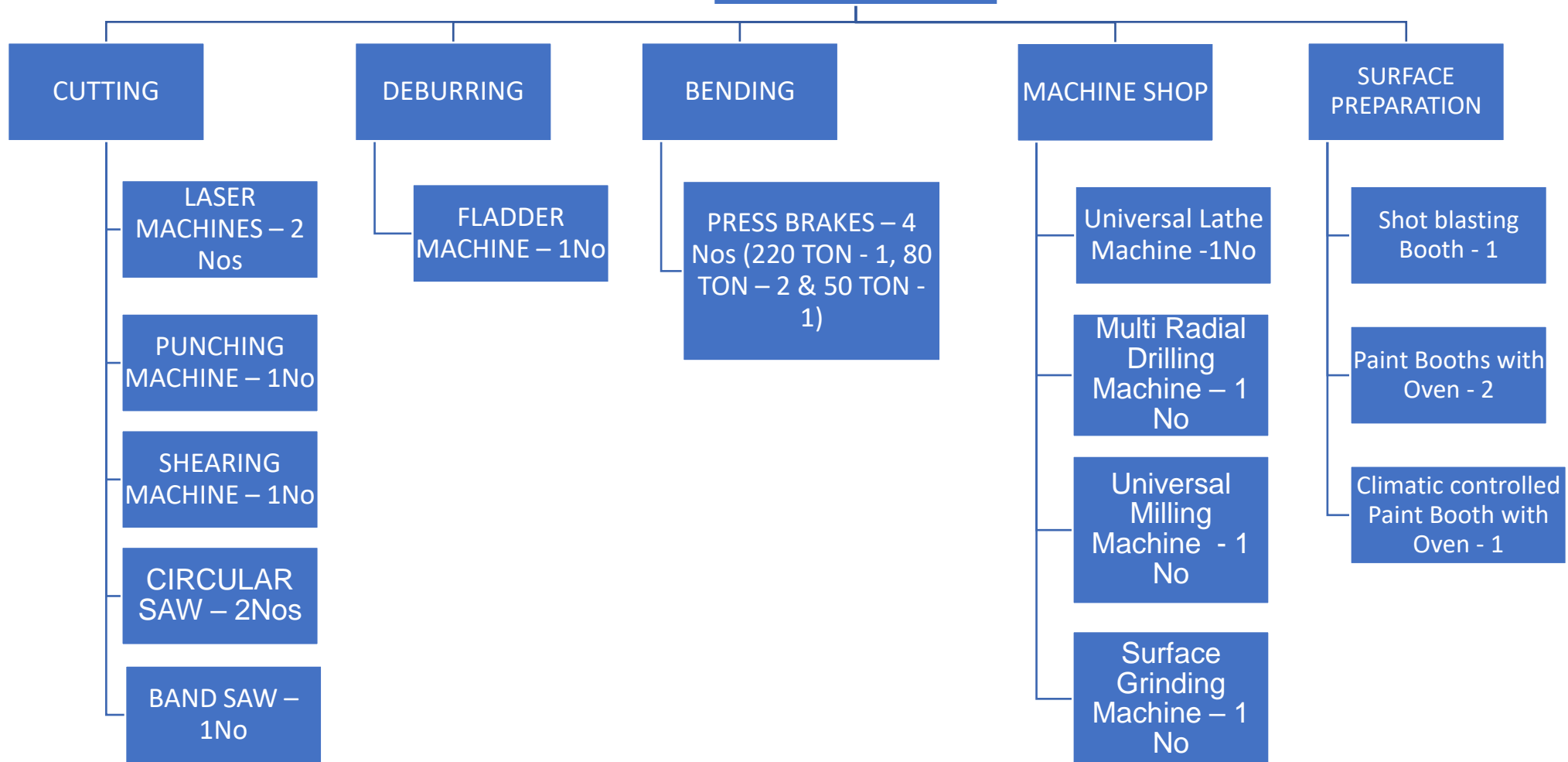


Benefits for Polmor Steel in co-operation with Polmor Poland

- Transfer of technical know-how
- Transfer of management experience
- Education/ trainings
- Supervision/ maintenance by experienced personnel
- Investments in equipment and facilities

The company specializes in the production of highly complex products based on the use of cutting processes, bending, drilling holes and special processes: welding and wet painting.

INHOUSE FACILITIES



Facilitate introduction of climatic paint-booth for waterborne paint system of environmentally friendly surface treatment



- 115 TR Chiller capacity
- 35.000 cubic meter per hour cooling capacity of AHU Unit
- De – Humidification automatic system integrated with RO water system
- rail-up lifting system

This features allow us continuously maintain the painting operational temperature within the range of 21-26 ° C and simultaneously control the relative humidity between 40 and 60%.

PRODUCTION HALLS



**ALL TOGETHER 7,000 M², DIVIDED TO CARBON STEEL,
STAINLESS STEEL, ALUMINUM FABRICATION HALLS &
MECHANICAL ASSEMBLY HALL**

MANUFACTURING PROCESSES

CUTTING

BENDING

MILLING

TURNING

LOCKSMITH

WELDING
MIG/MAG/TIG

SHOT-
BLASTING

DEGREASING

GLUING

WET
PAINTING

MECHANICAL
ASSEMBLY

POLMOR PRODUCTS / RAILWAY INDUSTRY



TRACTION TRANSFORMER TANK

Material:	Manufacturing::	Surface treatment::
Carbon Steel	Welding	Wet Painting



PART OF PASSENGER TRAIN ROOF

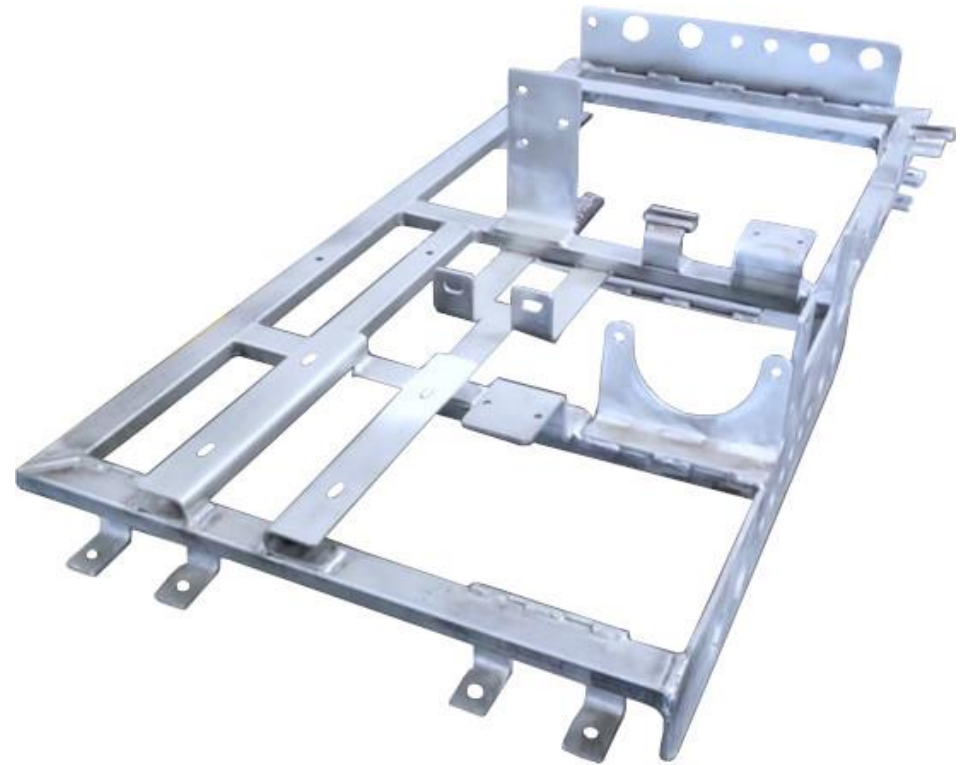
Material:	Manufacturing::	Surface treatment::
Stainless Steel	Welding	N/A

POLMOR PRODUCTS / RAILWAY INDUSTRY



CRASH ABSORBER

Material:	Manufacturing::	Surface treatment::
Carbon Steel	Welding	Wet Painting



PART OF PNEUMATIC BRAKE FRAME

Material:	Manufacturing::	Surface treatment::
Stainless Steel	Welding	N/A

POLMOR PRODUCTS / RAILWAY INDUSTRY



PART OF BATTERY SYSTEM STRUCTURE

Material:	Manufacturing::	Surface treatment::
Carbon steel	Welding	N/A



PART OF BATTERY SYSTEM - TRAY

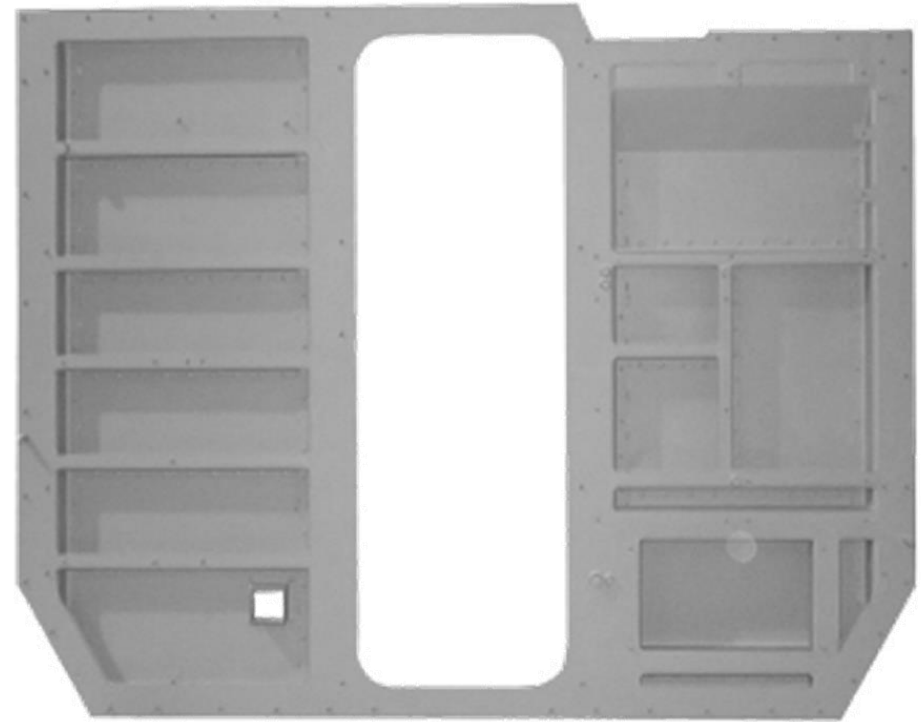
Material:	Manufacturing::	Surface treatment::
Carbon steel	Welding	N/A

POLMOR PRODUCTS / RAILWAY INDUSTRY



TRAIN SANDING BOX

Material:	Manufacturing:	Surface treatment:
Stainless Steel	Welding	N/A



LOCOMOTIVE PARTITION WALL

Material:	Manufacturing:	Surface treatment:
Aluminium	Welding	N/A

POLMOR PRODUCTS / RAILWAY INDUSTRY



BATTERY BOX

Material:	Manufacturing::	Surface treatment::
Stainless Steel	Welding	N/A



BATTERY BOX

Material:	Manufacturing::	Surface treatment::
Stainless Steel	Welding	N/A

POLMOR PRODUCTS / RAILWAY INDUSTRY



TRAIN TRACTION CONVERTER HOUSING

Material:
Magnelis

Manufacturing:
**Screw &
Glue**

Surface treatment:
Wet Painting



TRAIN TRACTION CONVERTER HOUSING

Material:
**Galvanised steel
/ Aluminium**

Manufacturing:
**Screw &
Glue**

Surface treatment:
Wet Painting

POLMOR PRODUCTS / RAILWAY INDUSTRY



TRAIN CONVERTER STATIC HOUSING

Material:
Magnelis

Manufacturing::
Screw &
Glue

Surface treatment::
Wet Painting



TRAIN INVERTER HOUSING

Material:
POSMAC
(PM3HT 440C)

Manufacturing::
Screw &
Glue

Surface treatment::
N/A

POLMOR PRODUCTS / RAILWAY INDUSTRY



TRAIN INVERTER HOUSING

Material:
Aluminium /
Stainless Steel

Manufacturing:
Screw &
Glue

Surface treatment:
Wet Painting



TRAIN INVERTER HOUSING

Material:
Aluminium
/Stainless Steel

Manufacturing:
Screw &
Glue

Surface treatment:
Wet Painting



POLMOR PRODUCTS / RAILWAY INDUSTRY



BATTERY BOX

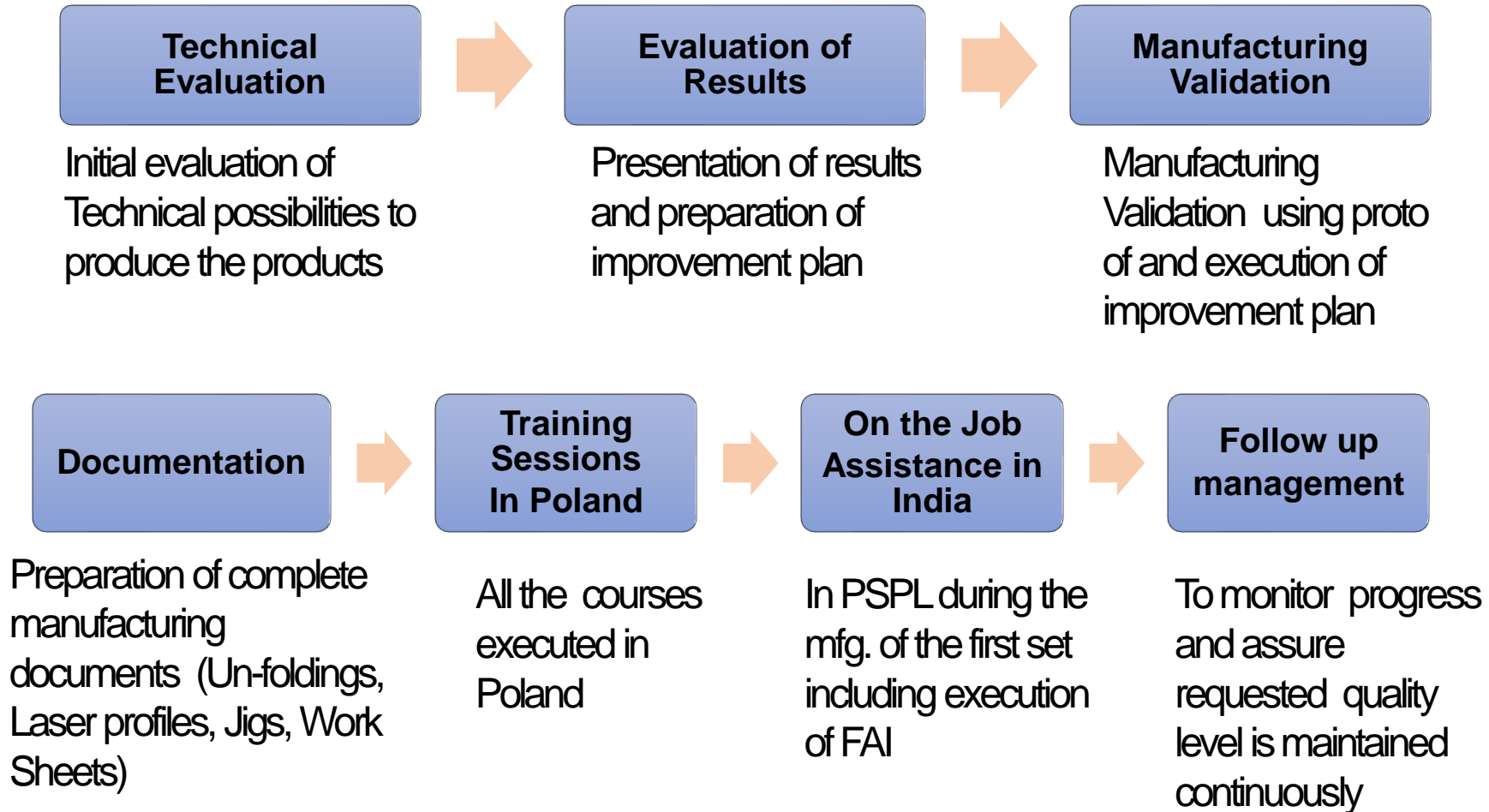
Material:	Manufacturing::	Surface treatment::
Stainless Steel	Welding	Wet Painting



BATTERY BOX

Material:	Manufacturing::	Surface treatment::
Stainless Steel / Carbon steel	Welding	Wet Painting

Typical ToT / Industrialization Assistance

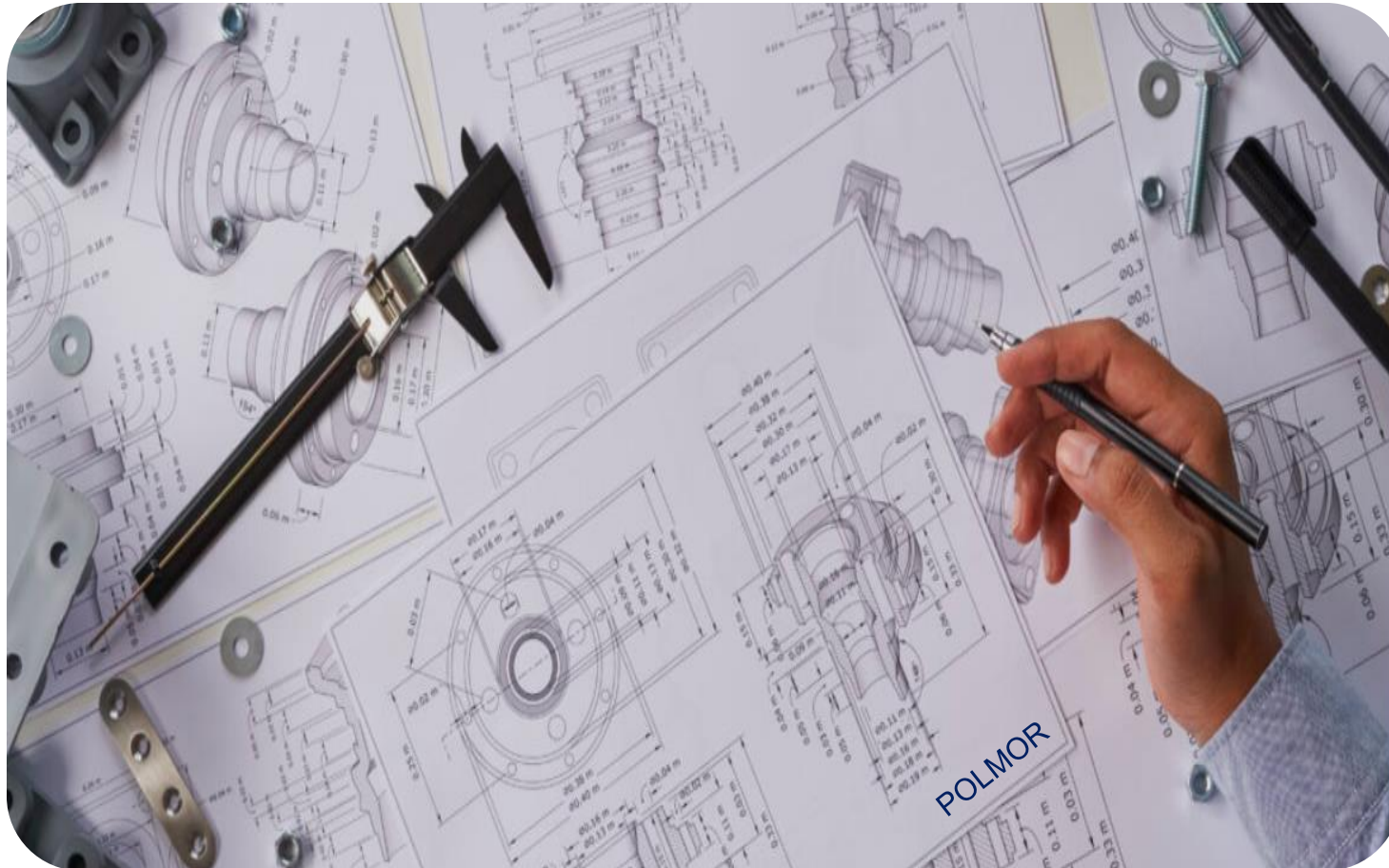


Projects with ToT from Poland



Project	Customer	Project	Customer
Chennai Metro – Traction Housing	Alstom	Chennai Metro – Battery Box	Saft
XCC EMS / X60 BB NG – Traction Housing	Alstom	Lucknow Metro – Battery Box	Saft
RIYADH – Traction Housing	Alstom	E-Loco– Battery Box	Saft
TRENITALIA Traction Housing	Alstom	Montreal – Battery Box	Saft
TRENITALIA Static Convertor Housing	Alstom	DRMC – Battery Box	Bombardier
ICNG Traction Housing	Alstom	QNGR – Battery Box	Bombardier
ICNG Static Convertor Housing	Alstom	PP – Battery Box	Alstom
TTNG AEL 1 & 2 – Electrical Equipment case	Alstom	PP – Roof Cabin	Alstom
HANOI – Traction Housing	Alstom	Chennai, Lucknow, Sydney, Hanoi, Dubai, PP, Trenitalia, RER – Absorbers	Alstom
HANOI Static Convertor Housing	Alstom		
E-LOCO (E-BLOC & HV) Housing	Alstom		
URJA Invertor Housing	Siemens		
S70 Invertor Housing	Siemens		

POLMOR PRODUCTION PREPARATION



TECHNOLOGISTS: 6

WELDING SUPERVISOR: 2

CNC PROGRAMERS: 2

GLUING SUPERVISOR : 1

SOFTWARE CAPABILITIES

CATIA V5

DRAFTSIGHT

POLMOR CERTIFICATES

- ISO/ TS 22163 : 2017 Certified by DNV, INDIA
- ISO 9001: 2015 Certified by TUV, INDIA (excluded: Design & Development)
- EN 15085-2 Certified by TUV RHEINLAND
- DIN 6701 - 2 Certified by IFAM FRAUNHOFFER, GERMANY



POLMOR CLIENTS

ALSTOM

saft

 **Hitachi Energy**

 **SERVOMAX**®

BOMBARDIER
the evolution of mobility

SIEMENS
Ingenuity for life

 **MEDHA**™



Thank You

POLMOR

On the shop floor, PPE Kits are a must for visitors

Hearing
Protection



Foot
Protection

